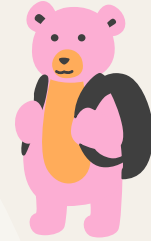




**BRENTWOOD
KINDERGARTEN
2021-2022**



WELCOME!



Principal
Mr. Garry Russell



Assistant Principal
Mr. David Roper



Teacher
Mrs. Kristy Elkow

01 **WELCOME**

02 **LEARNING AREAS**

03 **BUSSING & CALENDAR**

04 **LOGOS**

05 **TYPICAL DAY IN KINDER**

06 **PREPARING FOR KINDERGARTEN**

07 **SUPPORTS**

08 **KEEPING INFORMED**



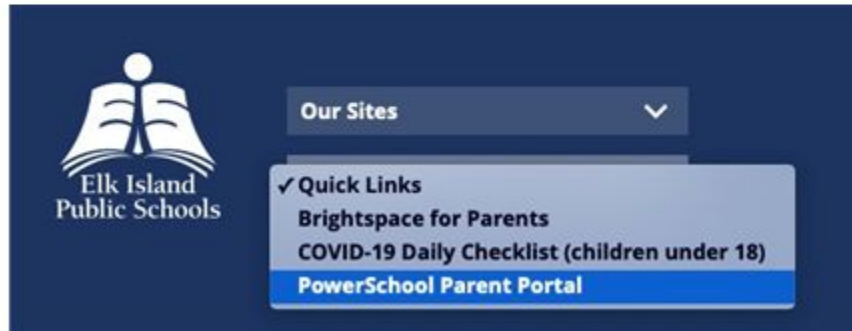
LITERACY-RICH, PLAY-BASED PROGRAMMING

Learning Areas



- Early literacy
- Early numeracy
- Citizenship and identity
- Environment and community awareness
- Personal and social responsibility
- Physical skills and well-being
- Creative expression

POWERSCHOOL PARENT PORTAL



- Online access to your child's grades, attendance and school fees
- One Parent Portal account to link all children in the family together
- Your account follows each student as they move through the Division



STUDENT TRANSPORTATION

- Bus routes
- Bus passes
- Transportation fees
- Little Elk Island Adventure

Transportation fees are due June 30, 2021
and are paid online at [eips.ca/transportation/
transportation-fees/student-transportation-online-payments](https://eips.ca/transportation/transportation-fees/student-transportation-online-payments)



Student Transportation: Little Elk Island Adventure

Students and parents learn:

- How to be safe when around the bus
- What the Danger Zone is and where it is located
- How to board the bus and scan their bus pass
- How to sit properly on the school bus
- EIPS' Code of Conduct

Learn more at

eips.ca/transportation/little-elk-island-adventure





EIPS KINDERGARTEN CALENDAR 2021-22

 Regular School Day
 Early Dismissal for Students
 First Instructional Day (Semester 1 & 2)
 No School – Statutory or Paid Holiday
 No School for All Students and Staff
 No School for Students – Professional Learning/Operational Day

SCHEDULE A: Mondays, Wednesdays and select Fridays

AUGUST 2021

S	M	T	W	T	F	S
1	2	3	4	5	6	7
8	9	10	11	12	13	14
15	16	17	18	19	20	21
22	23	24	25	26	27	28
29	30	31				

SEPTEMBER 2021

S	M	T	W	T	F	S
				1	2	3
4	5	6	7	8	9	10
11	12	13	14	15	16	17
18	19	20	21	22	23	24
25	26	27	28	29	30	

Important Dates

OCTOBER 2021

S	M	T	W	T	F	S
					1	2
3	4	5	6	7	8	9
10	11	12	13	14	15	16
17	18	19	20	21	22	23
24	25	26	27	28	29	30
31						

NOVEMBER 2021

S	M	T	W	T	F	S
		1	2	3	4	5
6	7	8	9	10	11	12
13	14	15	16	17	18	19
20	21	22	23	24	25	26
27	28	29	30			

DECEMBER 2021

S	M	T	W	T	F	S
			1	2	3	4
5	6	7	8	9	10	11
12	13	14	15	16	17	18
19	20	21	22	23	24	25
26	27	28	29	30	31	

JANUARY 2022

S	M	T	W	T	F	S
						1
2	3	4	5	6	7	8
9	10	11	12	13	14	15
16	17	18	19	20	21	22
23	24	25	26	27	28	29
30	31					

FEBRUARY 2022

S	M	T	W	T	F	S
6	7	8	9	10	11	12
13	14	15	16	17	18	19
20	21	22	23	24	25	26
27	28					

MARCH 2022

S	M	T	W	T	F	S
		1	2	3	4	5
6	7	8	9	10	11	12
13	14	15	16	17	18	19
20	21	22	23	24	25	26
27	28	29	30	31		

April 2022

S	M	T	W	T	F	S
					1	2
3	4	5	6	7	8	9
10	11	12	13	14	15	16
17	18	19	20	21	22	23
24	25	26	27	28	29	30

MAY 2022

S	M	T	W	T	F	S
		1	2	3	4	5
6	7	8	9	10	11	12
13	14	15	16	17	18	19
20	21	22	23	24	25	26
27	28	29	30	31		

JUNE 2022

S	M	T	W	T	F	S
			1	2	3	4
5	6	7	8	9	10	11
12	13	14	15	16	17	18
19	20	21	22	23	24	25
26	27	28	29	30		

JULY 2022

S	M	T	W	T	F	S
						1
2	3	4	5	6	7	8
9	10	11	12	13	14	15
16	17	18	19	20	21	22
23	24	25	26	27	28	29
30	31					

EIPS offers full-day programming on alternating days.

- Monday, Wednesday and select Fridays, or
- Tuesday, Thursday and select Fridays

475 instructional hours per year

Find the Division calendar at eips.ca/calendar

Visit the calendar page on the school's website for school-specific dates and events.

STAGGERED ENTRY

Students will attend for a full day of Kindergarten based on the first letter of their last name.



Group A

Last Name

A - L -

Wednesday September 1st 2021

M - Z

Friday September 3rd 2021

Group B

Last Name

A - L

Thursday September 2nd 2021

M - Z

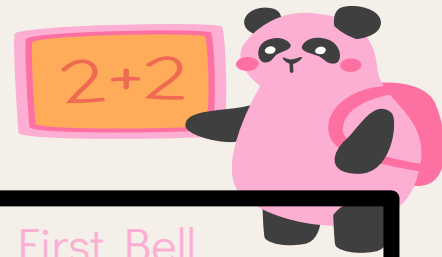
Tuesday September 7th 2021



Logos Christian Program

A TYPICAL DAY IN MRS. ELKOW'S KINDERGARTEN

- ★ mornings are very literacy based
- ★ we participate in music and gym classes
- ★ recess and lunch with the entire school
- ★ imagination Stations
- ★ end of Day Sharing Circle



- ★ First Bell
8:30
- ★ Morning Snack
9:45
- ★ Recess
10-10:15
- ★ Lunch Eating
11:53 - 12:23
- ★ Recess
12:23 - 12:53
- ★ Afternoon Snack
2:20
- ★ Hometime
3:05

DROP OFF AND PICK UP



Bus friends

- student's who ride the bus will be met by our Educational Assistant and walked over to our doors
- they will be escorted to the bus at the end of the day

Other friends

- I dismiss each student to their adult at our Kindergarten doors

**If there are any changes email me or contact the office

PARENT INVOLVEMENT

School Council

Classroom Volunteers

Class field trips and parties

School fundraising



PREPARING FOR KINDERGARTEN



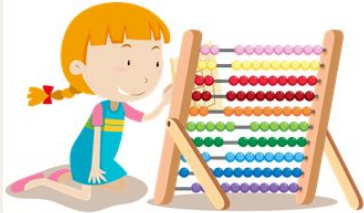
Communication and literacy



Motor skills



Social-emotional development



Numeracy



Self-help skills



Eye See, Eye Learn

EARLY YEARS EVALUATION

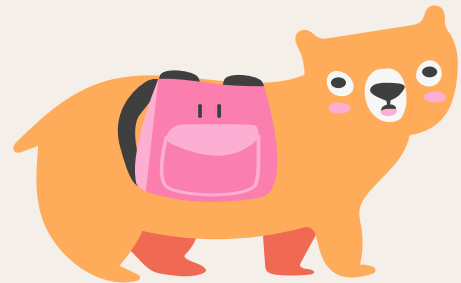


Early Years Evaluation – Teacher Assessment (EYE-TA)

- Administered in the fall
- Uses teachers' regular observations and informal assessments
- Helps determine a child's progress and development in five key areas
 - Awareness of self and environment;
 - Social skills and approaches to learning;
 - Cognitive skills;
 - Language and communication; and
 - Physical development
- Assessment findings used to help plan instruction

SUPPORTS AVAILABLE

- Speech Language
- Occupational Therapy



KEEPIN' UP WITH KINDER

- each student will have a Home Folder
- Keepin' up with Kinder weekly emails
- monthly classroom newsletters
- twitter and instagram

@Brentwood EIPS @ElkowsKinders

-school website

<https://www.brentwoodelementary.ca/>

